

SAPGUI for Windows Upgrade to Release 7.30

In This Issue

- SAPGUI Defined
- New Features
- Security
- GUI Options
- GUI Help

SAPGUI Defined

Every information system needs to interact with the user in some way. Basic term GUI (or front end) stands for Graphical User Interface and its common function is allow the user to connect to the system and show or process user interaction (e.g. user's inputs) with graphics in addition to text information.

SAP GUI for Windows is an implementation especially designed for the Windows operating system, providing a Windows-like user experience and integration with other applications, based on OLE interfaces or ActiveX controls.

New Features

- 1) SAPGUI built using Visual Studio 2010 and supported up to 2015.
- 2) Supports Windows 8 and Windows Server 2012. IE10 Desktop (excluding the Metro version) also supported.
- 3) New Corbu theme introduced. This is a high contrast theme (reduced color palette) which enables improved integration with other SAP software.
- 4) For those visually impaired, SAP offers a high contrast option for the SAP Signature Theme.
- 5) SAP Signature Design now supports hue changes. This means you can now set your color scheme by system/client if you have Windows 7 or above. The Signature Design also allows you to use the Corbu icons by means of a switch in user options.
- 6) Customizable Tab Order - Users can switch the tab sequence on application screens.
- 7) Comments for Connection Entries on SAPLOGON pad.
- 8) Floating docking containers - Users can rearrange some screens according to their preference.
- 9) ALV Improvements - Usability enhancements for operations (like block copy and Microsoft Excel integration).
- 10) Security configuration improvements in SAPGUI options.

Websites:

help.sap.com

[sapguifeatures.pdf](#)

Security

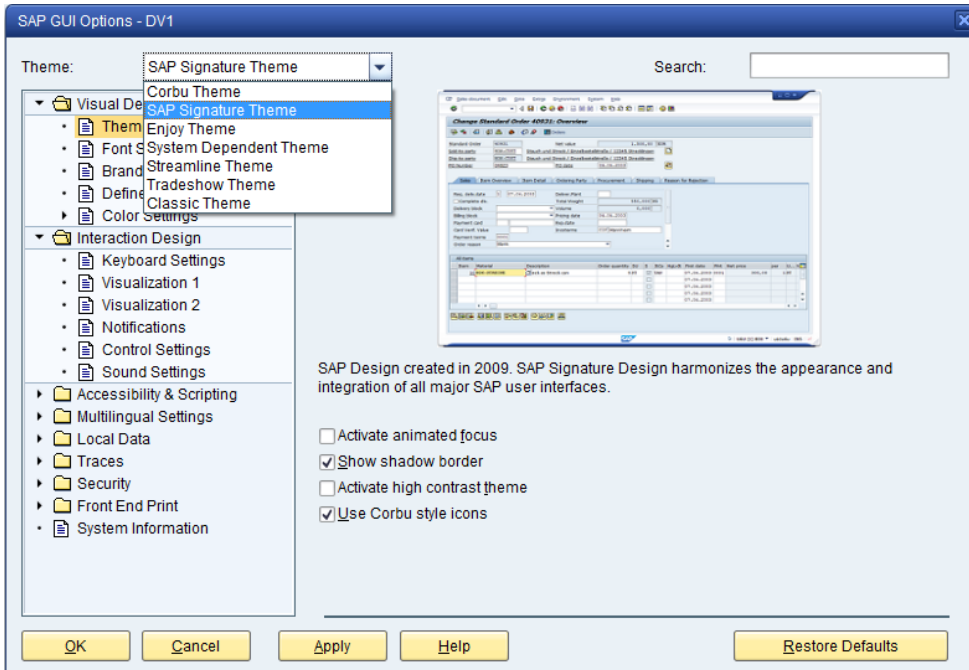
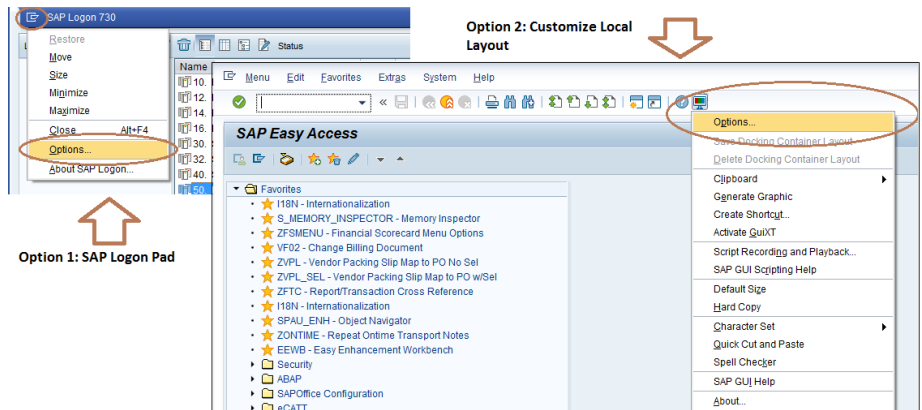
This GUI version introduces the Security Center to protect the client computer that runs the GUI. We have rules set by SAP, Corporate and the Users which are evaluated in this same order. First match will be executed. Rules can be set to one System, Client, Program and Screen Number. When you read/write to client pc or network share, you will now receive popups asking for permission and this popup can be answered as appropriate. Drop down lists available options which may be different for each scenario.

GUI Options

To change SAPGUI options, there are three approaches to launching the options screen.

The first is via the SAP Logon Pad.
Your second option is the customize local layout icon on any SAP screen.

The third option is from the Microsoft Windows start menu -> Control Panel -> SAP GUI Configuration.



NOTE: After having changed the SAP GUI theme, a restart of SAP Logon is required! The Theme selection affects all system accesses and SAP Logon itself.

NOTE: The button Restore Defaults deletes all locally stored option settings and resets them to the default values delivered by SAP. When you push this button you have the option to delete security settings and/or delete everything outside of security settings. This is useful if you accidentally set a security setting one way and now way to change it.

SAP GUI Questions / Help

On the same menu where you select options, there is a menu option named SAP GUI Help that will launch the SAPGUI Help in HTML format. There is a lot of information that will assist you to improve your SAP user experience and we invite everyone to review this information as we simply can't cover every detail in this summarized newsletter.

SAPGUI help is available from many resources including:

- SAP Online Help (Customizing of Local Layout -> SAP GUI Help)
- Help Desk
- LAN Administrator
- I.T. Business Analyst